

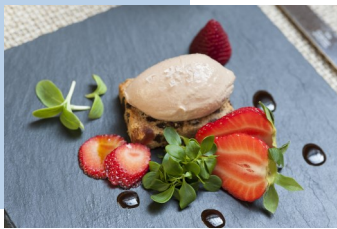


THE SLOANE CLUB
CHELSEA LONDON

The Sloane Club is one of London's most esteemed Private Members Clubs and your own home-away-from-home. In the heart of Chelsea, The Sloane Club is ideally located to enjoy the best of London while offering homely luxury and five-star quality services within.

DINING

Our Executive Chef, Bernhard Mayer, creates delicious seasonal menus to be enjoyed in the Dining Room, Bar and Garden Room. There is always something



to be tempted by at The Sloane Club, with breakfast, brunch, lunch, afternoon tea and dinner available each day. Previously Executive Chef at The Savoy, Bernhard creates European specialities to perfection.

MEMBERS' ROOMS

There are plenty of spaces to relax with friends, or to while away an afternoon with a book or the paper here at The Sloane Club. Our Drawing Rooms are filled with inviting sofas and the walls



decorated with impressive oil paintings and quirky cartoons. We also have a private Roof Terrace, the ideal place to enjoy a cocktail in the sun.

BEDROOMS

We have 133 tranquil bedrooms, all complete with sumptuous bedding: fine percale cotton linen, a luxurious 3" feather and down mattress topper and Siberian goose down duvet and pillows, tea and coffee facilities, hairdryers, air conditioning, Wi-Fi access, flat screen televisions and newly refurbished



bathrooms with L'Occitane toiletries. Rates are from £163 per night inclusive of Continental breakfast, WiFi and VAT.

CONCIERGE

No request is too much. Our Concierge Enrico can help with transport, reservations, theatre tickets and more. If you are looking for last minute tickets or advice on how to spend your time in London, contact Enrico at Reception.

ENTERTAINING

If you are planning a special event or celebration, consider The Sloane Club's as your venue. Our Private Dining Room seats up to 18 for intimate dinners and our Chelsea Rooms can accommodate up to 100 standing for a drinks reception. Our rooms are ideal for any celebration, from weddings and christenings to reunions and birthdays. We create bespoke menus to make your event truly memorable.

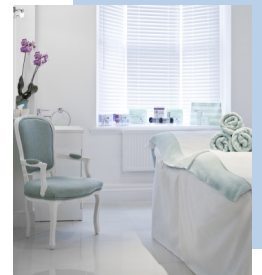


EVENTS

We organise a number of Members' events each year, which range from trips to stately homes and historical landmarks to literary festivals and English vineyards. Our Affiliate Members are welcome to join us, please enquire directly about our forthcoming calendar of events.

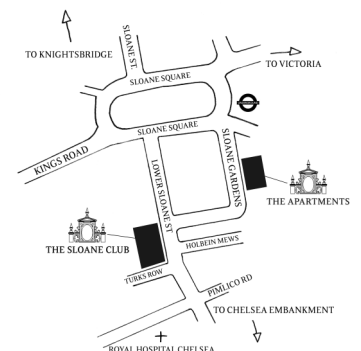
SPA

The Sloane Club Spa offers luxurious and indulgent treatments using Bioeffect, Dermalogica and Essie products. If you can't decide which treatment to have, our team of expert therapists are on hand to advise you. The Spa is open Monday – Saturday with selected treatments available out of hours.



LOCATION

The Sloane Club is located on lower Sloane Street, a few minutes' walk away from Sloane Square tube station, Kings Road and Sloane Square. Victoria station is a 15 minute walk or a short tube or taxi journey away, for multiple routes around London and airport connections.



reservations@sloaneclub.co.uk | 020 7730 9131 | www.sloaneclub.co.uk

THE SLOANE CLUB, LOWER SLOANE STREET, CHELSEA, LONDON SW1W 8BS